

## Ormskirk Paediatric Emergency Department Monthly Bulletin: October 2011 to September 2012

This bulletin provides a breakdown of all injury attendances at Ormskirk Paediatric Emergency Department (ED) between October 2011 and September 2012.<sup>1</sup>

Between October 2011 and September 2012 there were 5,489 ED attendances. Injury attendances peaked in May (n=623), with December (n=249) having the least number of injury attendances (**Figure 1**).

**Figure 2** illustrates injury attendances by gender. For all months there were more male (60%) injury attendances than female presenting at Ormskirk Paediatric ED.

**Figure 3** presents the age group of injury attendances. Across the whole year almost two-fifths (38%) of injury attendances were made by people aged between 10 and 14 years.

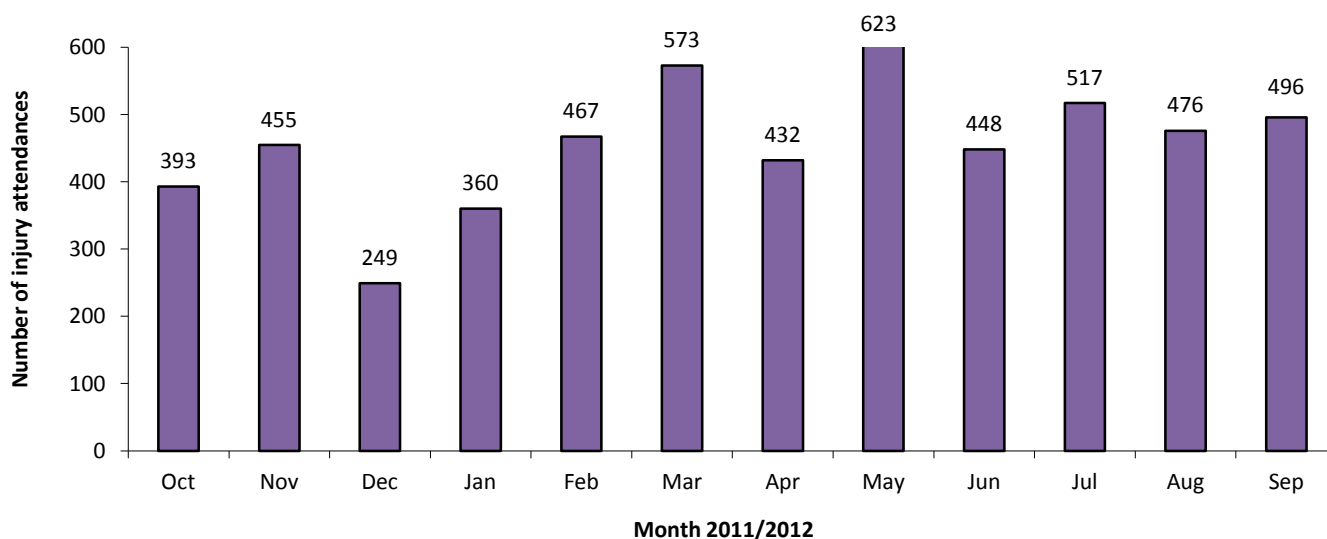
**Table 1** details the injury group of injury attendances. The majority of injury attendances

were classified as other injury (72%). Just over one-fifth (21%) were recorded as sports injury and 4% road traffic collisions (RTCs).

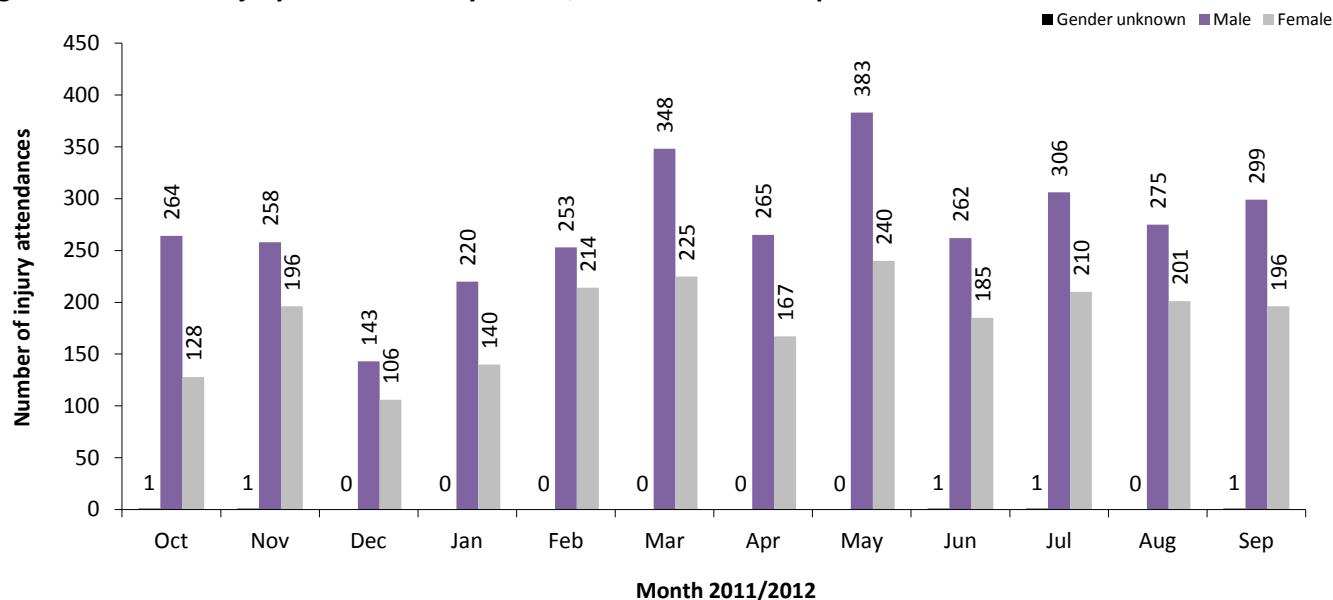
**Table 2** illustrates the source of referral for patients presenting with injuries. The majority (93%) of injury attendees were recorded as other. **Table 3** presents injury attendances by location of incident. Nearly four in ten of all injury locations were recorded as in a public place (38%) or in the home (34%). **Table 4** shows the disposal method of injury attendances. Over seven in ten (72%) of attendees were discharged requiring no follow-up.

Assault attendees presenting at the Ormskirk ED between October 2011 and September 2012 were mainly male (69%) and the primary location of assault was in a public place (60%). The majority of ED assault attendances were aged 5 and 14 years (n=40; 52%) and 46% were aged between 15 and 29 (n=36).

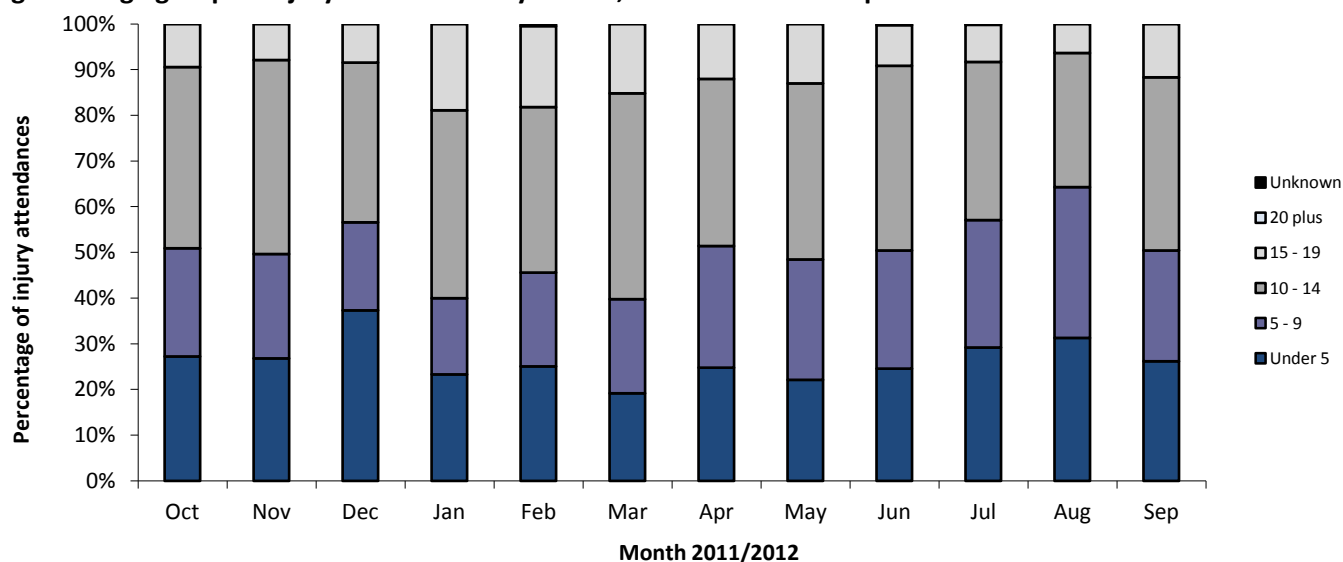
**Figure 1: Total number of injury attendances by month, October 2011 to September 2012**



**Figure 2: Gender of injury attendances by month, October 2011 to September 2012**



**Figure 3: Age group of injury attendances by month, October 2011 to September 2012**



**Table 1: Injury attendances by injury group and month, October 2011 to September 2012<sup>2,3</sup>**

Injury group	Oct	Nov	Dec	Jan	Feb	Mar	Apr	May	Jun	Jul	Aug	Sep	Total	%
Other injury	243	298	177	252	327	380	321	450	334	414	415	356	3967	72
Sports injury	106	115	32	78	99	163	78	143	87	83	36	112	1132	21
RTC	21	28	27	18	23	20	19	21	16	14	14	21	242	4
Assault	***	<11	5	7	6	5	8	<8	<8	<6	<8	<7	77	1
Deliberate self-harm	<20	***	8	5	12	5	6	***	***	***	***	***	71	1
<b>Total</b>	<b>393</b>	<b>455</b>	<b>249</b>	<b>360</b>	<b>467</b>	<b>573</b>	<b>432</b>	<b>623</b>	<b>448</b>	<b>517</b>	<b>476</b>	<b>496</b>	<b>5489</b>	<b>100</b>

**Table 2: Injury attendances by source of referral and month, October 2011 to September 2012<sup>4</sup>**

Source of referral	Oct	Nov	Dec	Jan	Feb	Mar	Apr	May	Jun	Jul	Aug	Sep	Total	%
Other	349	417	226	334	430	540	402	579	427	486	441	461	5092	93
Health care provider: same or other	10	18	9	9	11	15	19	25	8	12	23	18	177	3
Self referral	19	8	5	***	12	6	***	***	6	***	5	***	70	1
Emergency services	***	***	***	***	***	9	***	5	***	8	***	8	54	1
Educational establishment	5	5	6	***	6	***	***	6	***	5	***	***	44	1
GP	***	***	***	6	***	***	***	5	***	***	***	***	35	1
Unknown	***	***	***	***	***	***	***	***	***	***	***	***	8	0
Police	***	***	***	***	***	***	***	***	***	***	***	***	<9	0
Local authority social services	***	***	***	***	***	***	***	***	***	***	***	***	***	0
<b>Total</b>	<b>393</b>	<b>455</b>	<b>249</b>	<b>360</b>	<b>467</b>	<b>573</b>	<b>432</b>	<b>623</b>	<b>448</b>	<b>517</b>	<b>476</b>	<b>496</b>	<b>5489</b>	<b>100</b>

**Table 3: Injury attendances by location of incident and month, October 2011 to September 2012<sup>5</sup>**

Location	Oct	Nov	Dec	Jan	Feb	Mar	Apr	May	Jun	Jul	Aug	Sep	Total	%
Public place	160	143	77	117	159	228	199	231	166	204	218	201	2103	38
Home	120	143	110	115	160	144	156	202	159	192	193	147	1841	34
Educational establishment	93	154	48	109	133	182	50	138	88	63	10	99	1167	21
Other	20	15	14	19	15	19	27	52	35	58	55	49	378	7
<b>Total</b>	<b>393</b>	<b>455</b>	<b>249</b>	<b>360</b>	<b>467</b>	<b>573</b>	<b>432</b>	<b>623</b>	<b>448</b>	<b>517</b>	<b>476</b>	<b>496</b>	<b>5489</b>	<b>100</b>

**Table 4: Disposal method of all injury attendances by month, October 2011 to September 2012**

Disposal method	Oct	Nov	Dec	Jan	Feb	Mar	Apr	May	Jun	Jul	Aug	Sep	Total	%
Discharged - no follow-up	286	337	179	272	356	389	297	443	345	392	320	343	3959	72
Referred to fracture clinic	47	45	21	43	60	87	69	89	53	54	67	76	711	13
Referred to other health care professional	21	32	19	20	22	30	13	33	17	17	18	12	254	5
Admitted to hospital bed	11	19	16	10	12	17	15	20	11	17	11	10	169	3
Discharged – follow-up by other health care provider	10	***	***	***	7	14	13	10	7	9	26	26	131	2
Transferred to other health care provider	6	7	6	7	***	11	9	13	5	10	10	***	90	2
Referred to other out-patient clinic	10	10	***	***	***	5	8	***	***	5	7	7	66	1
Referred to ED clinic	***	***	***	***	***	***	***	***	7	9	14	17	58	1
Left ED before being treated	***	***	***	***	***	14	6	8	***	***	***	***	44	1
Left ED - refused treatment	***	***	***	***	***	***	***	***	***	***	***	***	<6	0
Other	***	***	***	***	***	***	***	***	***	***	***	***	***	0
<b>Total</b>	<b>393</b>	<b>455</b>	<b>249</b>	<b>360</b>	<b>467</b>	<b>573</b>	<b>432</b>	<b>623</b>	<b>448</b>	<b>517</b>	<b>476</b>	<b>496</b>	<b>5489</b>	<b>100</b>

Published January 2013

Johnathan Rooney (TIIG officer), Val Upton (Senior Public Health Researcher / Analyst)  
 Centre for Public Health, Faculty of Health and Applied Social Sciences, Liverpool John Moores University  
 2nd Floor, Henry Cotton Campus, Liverpool, L3 2ET

Tel: 0151 231 4539 Email: [j.rooney@ljmu.ac.uk](mailto:j.rooney@ljmu.ac.uk)

Website: [www.tiig.info](http://www.tiig.info) (please note all data requests should be made through the TIIG website)

<sup>1</sup> Previous reports include data from the Minor Injury Unit. These data are no longer housed by Ormskirk's information team but by the PCT and therefore cannot be included in this report.

<sup>2</sup> \*\*\* Please note that all numbers less than five have been suppressed in line with patient confidentiality and if there is only one number in a category then two numbers will be suppressed at the next level (e.g. <6) in order to prevent back calculations from totals.

<sup>3</sup> Due to low numbers firework injuries have been included under 'Other injury.'

<sup>4</sup> GP=general practitioner.

<sup>5</sup> Due to low numbers injuries sustained at work have been included under 'Other' location.